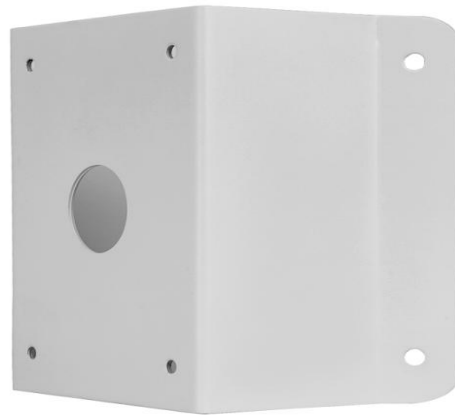


# IV-UC08-A-IN PTZ Dome Corner Mount



## Specifications

Bracket	IV-UC08-A-IN
Application	Indoor or outdoor, PTZ Dome Corner installation
Dimensions(L × W × H)	215mmx210mmx122mm(8.5" × 8.3"× 4.8")
Weight	1.87kg(4.1lb)
Material	steel

## Dimensions

