

CHAPTER 9 CMS INSTALLATION AND USAGE GUIDE

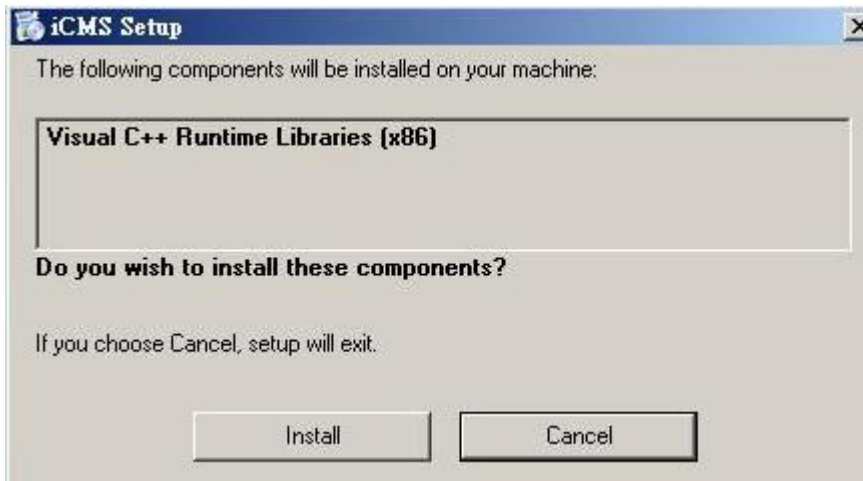
9-1 CMS Installation

System Requirement:

- * Intel Pentium 4 processor or equivalent.
- * Microsoft Windows Vista 、 Windows XP 、 Windows 2003 Server.
- * Besides OS and other required APs, there will be 512MB remaining memory needed or above.
- * 512MB memory above.(500M requested for group DVR connection and 180M for single DVR)
- * 20MB HD space. Recording and image capturing require extra space for storage.
- * VGA Card needs to support DirectX9 and function well while running it. Please refer to p48 Note 1.

Installation:

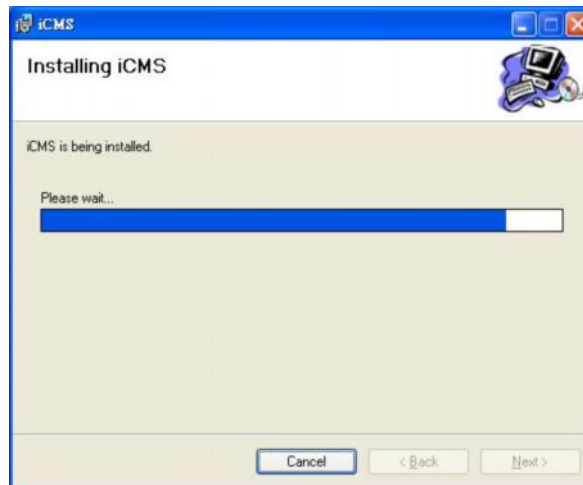
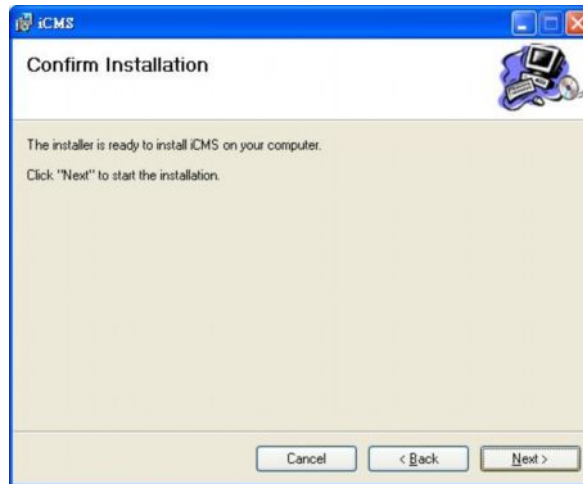
1. Connect to the manufacturer's website and download the CMS software.
2. Decompress and execute "**setup.exe**".
3. If "Visual C++ Runtime Libraries" has not been installed before in the operating PC, the following sign will suggest an installation automatically.



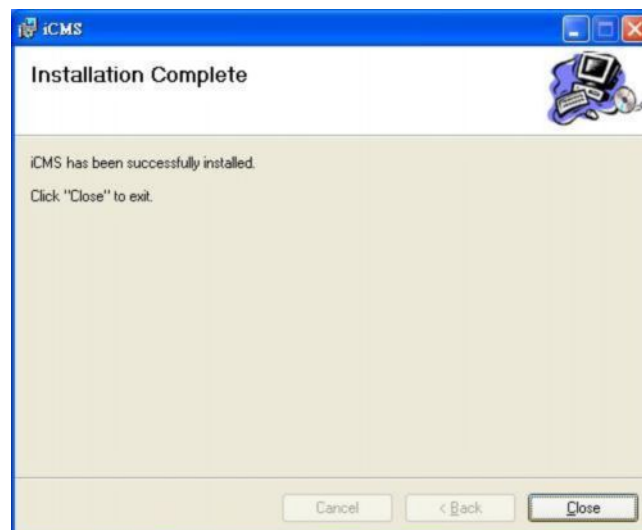
4. Select "**Next**", and then select "**Browse**" to change installation path if needed. To check available space on hard disk, please select "**Disk Cost**" then please select "**Next**" to the next step.



5. "Confirm Installation" window shows. Select 'Next' then the installation starts.

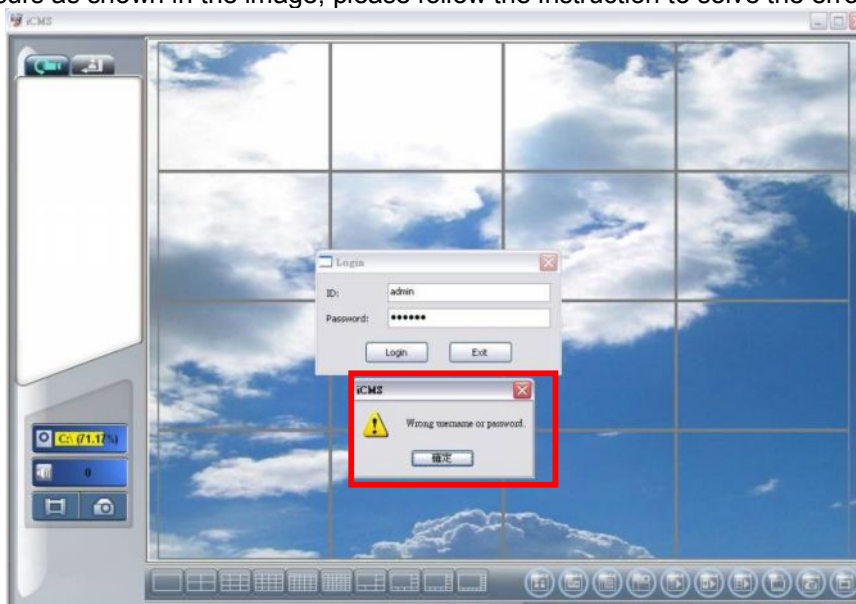


6. Select 'Close' to finish installation when the "Installation Complete" window shows.



Instruction for Log-in Failure to CMS after Upgrade

Log in to CMS with the default account and password after CMS upgrade. If an error message occurs as shown in the image, please follow the instruction to solve the error.



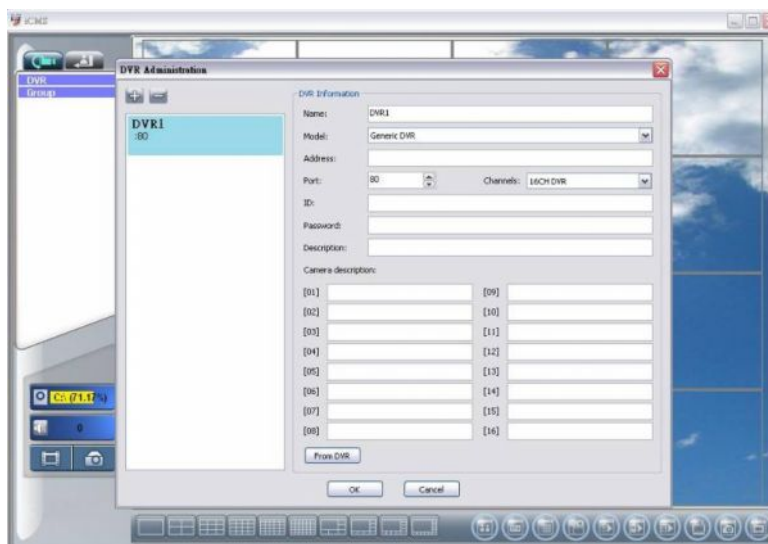
Step 1: Please enter file manager to enter folder, "Windows" and then folder "System32"
(ex:C:\Windows\System32)



Step 2: Locate file, "iCMS.dat" and delete it.

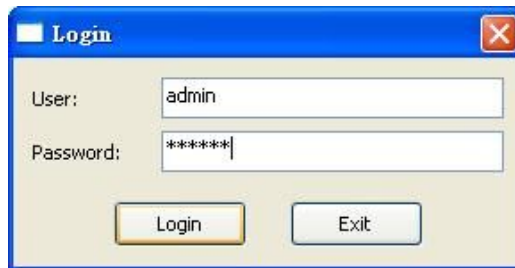


Step 3: Restart CMS. Log-in successfully.

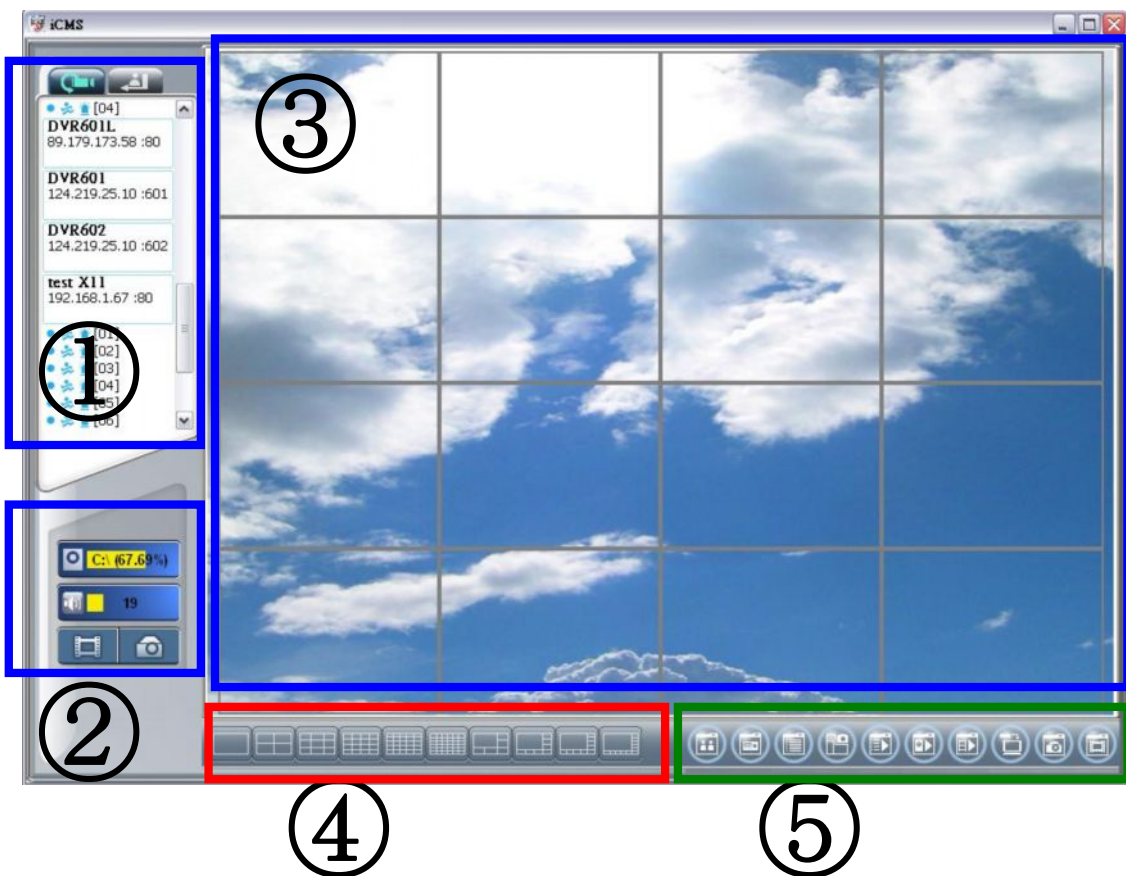


9-2 CMS LOGIN AND ENVIRONMENT

To enter CMS, the administrator's user name and password are required. The defaults are 'admin' and '123456'.





After successful login, the following image shows on your screen:



① DVRs, Groups & Events	Information about DVRs, groups and events. See "9-3 Information List" for more detail.
② PC information and control	Information about local PC's hard disk, volume, recording...etc. See "9-4 PC Information and Control" for more detail.
③ Main Display	Live image display area. See "9-5 Main Display" for detail.
④ Display Modes	Several choices of display modes supported by CMS.
⑤ Operation Bar	A set of 10 operations are provided by CMS. See "9-6 Operation Bar" for detail.

9-3 DVRs, Groups & Events

Icon	Description
	View list of logged in DVR/ Group.
	View Logs: list all the event information of DVR

9-3.1 View DVR/Group List




Single left click on 'DVR' or 'Group' will expand/collapse the entire DVRs and groups list.

On the DVR list, **double left click on a connected DVR will show its image in main display.** See "9-6.2 DVR Administration" for further information.

On the Group list, **double left click on a group will show live image from the channels of the group in the main display.** See "9-6.3 for Group Administration" for further information.



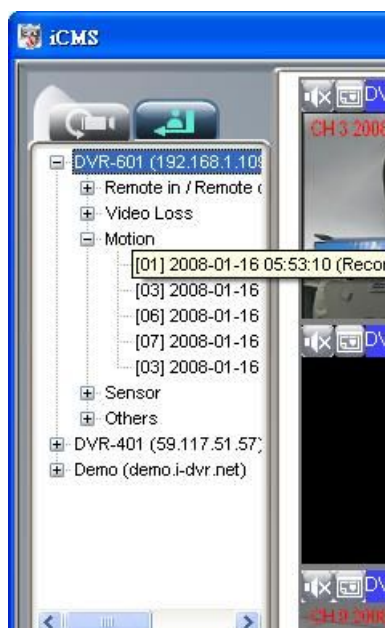
Left-clicking on a connected DVR will expand/collapse status of its all channels as below:

Icon	Description
	Video Loss
	Motion Detected
	Sensor Triggered



9-3.2 View Event Logs

Under this page, all the events of a DVR can be expanded/collapsed in the order of Remote in/Remote out, Video Loss, Motion, Sensor, Others (Power Reset, Key Lock, Key Unlock, HD Full).



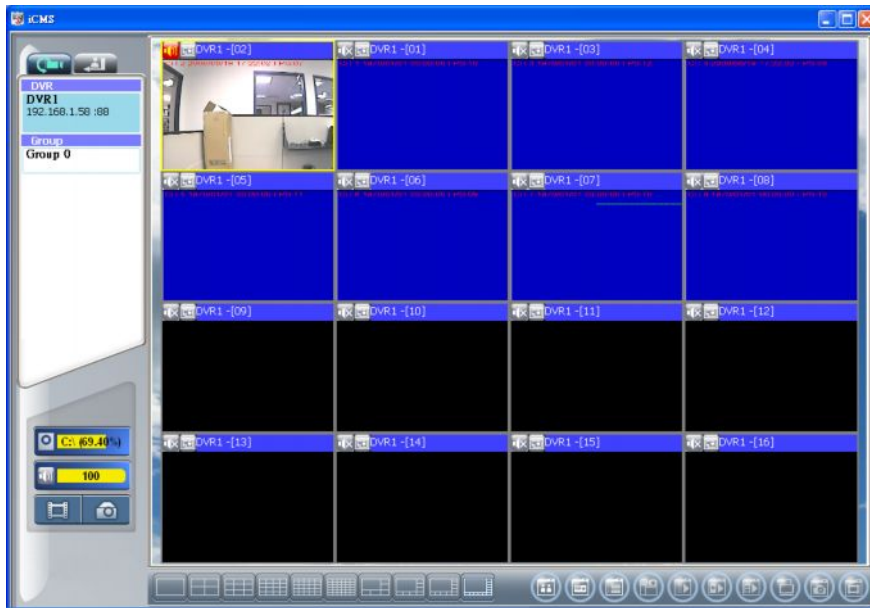
9-4 Local PC Information and Control

Located at the left lower corner of the screen, please see the chart below:

Icon	Function	Description
	HDD info	Shows the ratio of available space / HDD capacity of C:\ drive (where CMS is installed).
	Recording Directory	Setting Recording Directory. (Default is C:\Program files\iCMS)
	Recording Cycle	Set the capacity size of the Recording space. (minimum is 10MB)
	Volume	PC volume or playback volume control bar.
	Recording	Record live image to local PC storage. To view locally stored data, use "Record" under the operation bar. Also see "9-6.6 recording data" for detail.
	Snapshot	Take snapshot to save in local PC storage. To view all the snapshots you've taken, please go to "Snapshot" under the operation bar. See "9-6.5 Snapshot data" for detail.



9-5 Main Display

The main display area is where the live image of DVR is shown. You can drag to change the location of screen for each channel and turn on/off audio signal with mouse-click.

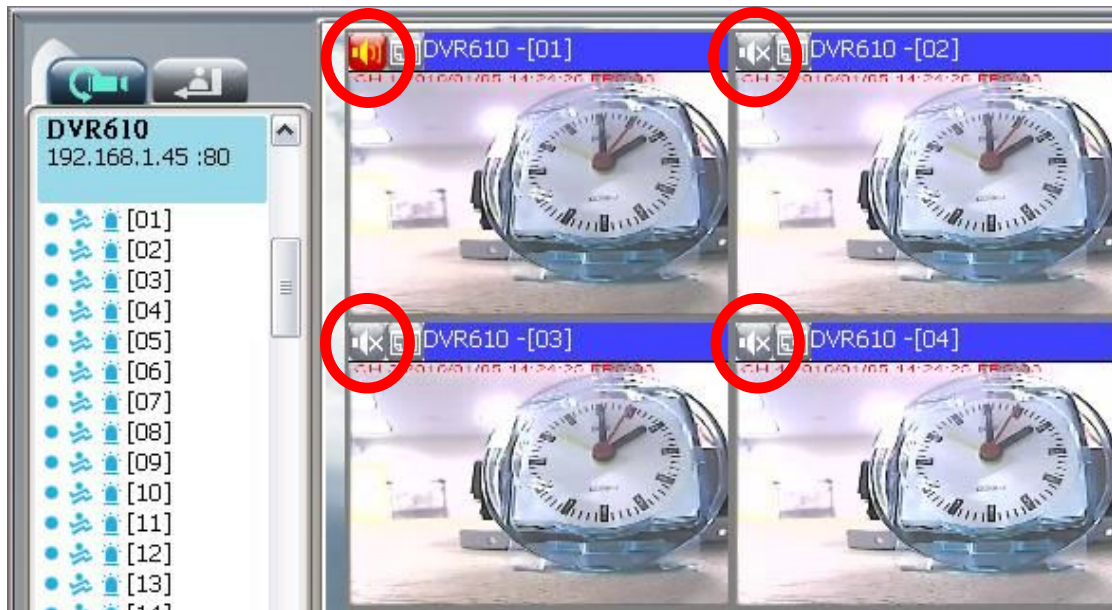


9-5.1 Audio Control


In live mode, you can turn on/off the audio signal of Ch1~Ch4:

- 「」 Audio signal is On
- 「」 Audio signal is Off

Turn on/off by clicking on the graphical icon, please note there can allow only one channel's audio signal to be on at one time.



9-5.2 eMAP Display

In Live mode, pressing  will bring the e-MAP drag-down menu. If the channel has been set up to use e-MAP, the menu will show all the e-MAP titles that have been entitled to this channel; otherwise, "No eMaps" will be shown. Please check "**9-6.4 eMAP administration**" for setup information.



9-5.3 PTZ Control

In the main display, right click on the channel will bring up PTZ control panel as below.



Icon	Description
8 direction key	Rotate the PTZ
	ZOOM+ : Zoom in
	ZOOM : Zoom out
	Setup the PTZ spot as pre-set N.
	FOCUS+ : Focus in
	FOCUS- : Focus out
	Move to pre-set N.
Set PTZ Preset	Setup 16 pre-set N.
Goto PTZ Preset	Move to specific pre-set N.
	Activate auto pre-set tour*
PTZ Sensitivity	Setup PTZ sensitivity*
	Setup the "start" and "end" of liner scan.*
	Activate the liner scan cruise.*
B	Adjust the Brightness (Down is +)
C	Adjust the Contrast (Down is +)
S	Adjust the Sharpness (Down is +)











*PTZ communication protocols from different brands aren't compatible 100% sometimes. Therefore, some of these functions may be unavailable.

9-6 Operation Bar

10 Operations to be listed as below:





Table 9-6.1 description of 10 operations:

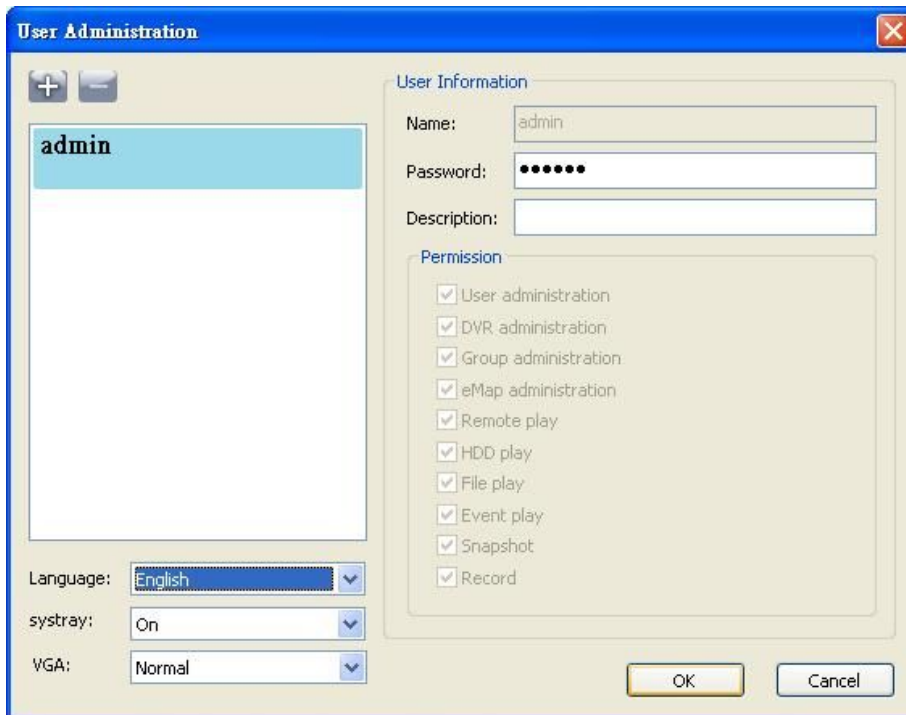
Icon	Description
	User Administration. Please see "9-6.1 User administration"
	DVR Administration. Please see "9-6.2 DVR Administration"
	Group Administration. Please see "9-6.3 Group Administration"
	eMap Administration. Please see "9-6.4 eMap Administration".
	Remote Playback. Please see "9-6.5 Remote Play".
	HDD Playback. Please see "9-6.6 HDD Play"
	File Playback. Please see "9-6.7 File Play"
	Event Playback. Please see "9-6.8 Event Play"
	Snapshot Data. Please see "9-6.9 Snapshot"
	Recording Data. Please see "9-6.10 Recording"

9-6.1 User administration

Before the CMS can be used on a PC, user accounts should be added with proper authority. Each user should also be assigned a password and optionally a description. If a user does not have certain authority assigned, he/she will not be able to operate the corresponding function on the Operation Bar. The default is none of the authority is assigned. The administrator should assign proper authority to each user. These user accounts can be deleted or edited later on.

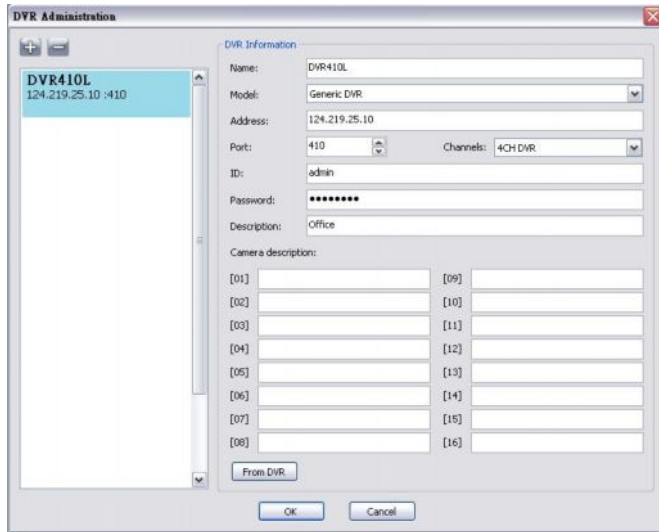
Select "OK" to save the setup.

Icon	Description
	Add a user account. The default authority is with none permission.
	Delete a user account.
Language	Switch display language
systray	If the turn on this feature, when the program reduced, it will be based in the system tray icon. (This feature is switched on / off, the need to re-open the CMS until after the program in force)
VGA turbo	Increase the VGA efficiency



9-6.2 DVR Administration

DVR connections can be added to or deleted from the CMS and their information can be edited. DVR's channel names can be entered here or downloaded from the DVR by pressing 'From DVR'. Select "OK" to save the information.



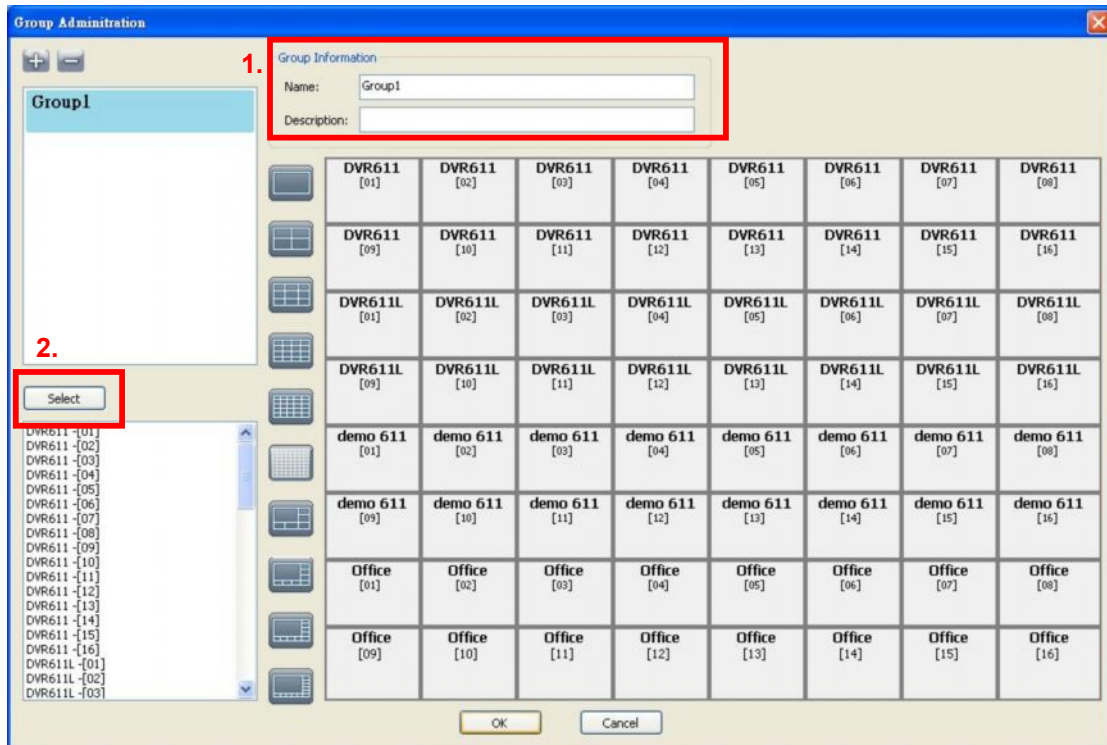
- Name:** DVR Name(Unrepeatable)
- Model:** DVR Model
- Generic:** For General Models
- Generic MainStream:** For DualStream Model
- DUAL SDVR:** For MPEG4 2U Models
- Address:** DVR IP Address
- Port:** DVR Network Port
- Channel:** DVR Camera Number
- ID:** DVR Login Account
- Password:** DVR Login Password
- Description:** Other Description
- Camera Description:** Carera Description
- From DVR:** Load Camera name from DVR

9-6.3 Group Administration

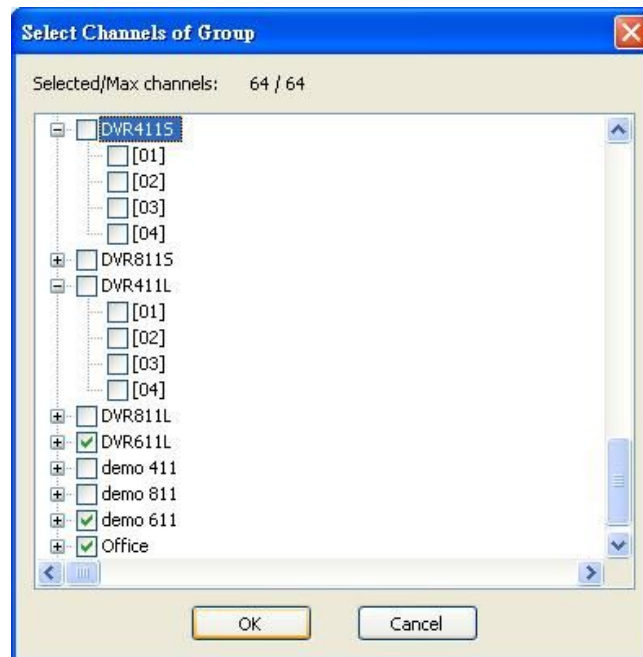
A 'Group' means a set of video channels from one or many DVRs, which means, user can organize channels from different DVRs to be set in a group. This function allows you to monitor and manager channels from multiple DVRs easily and flexible.

Steps:

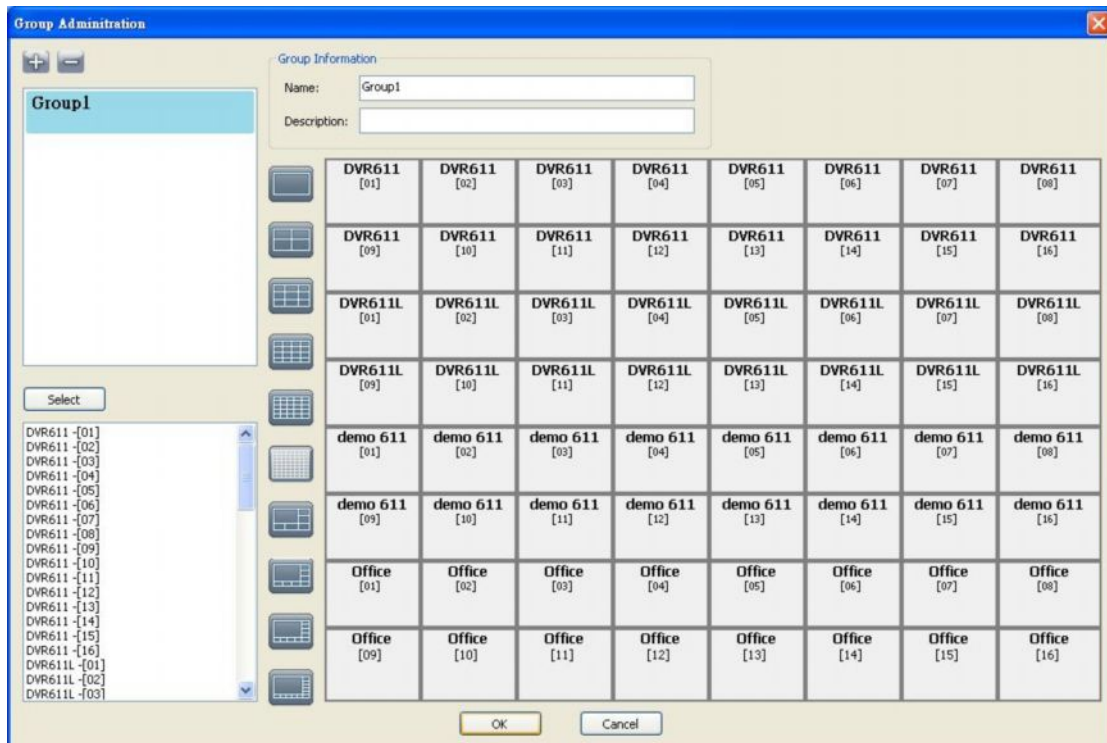
1. Add a new group and set its name and description.
2. Click 'Select' which will bring up a new window.



3. Check the specific channels that you'd like them to be included in the group. To include all channels of a DVR, just check the DVR.(1 Group up to select 64 camera)




4. Click "OK" to return to the previous window.
5. Select a display mode.
6. Drag a channel from the lower left panel into the main display to a preferred location. Or, change the channel location in the main display by mouse dragging.
7. You can 'Select' again to add other channels, but the un-saved channel locations will be lost.
8. Click "OK" to save the setup.

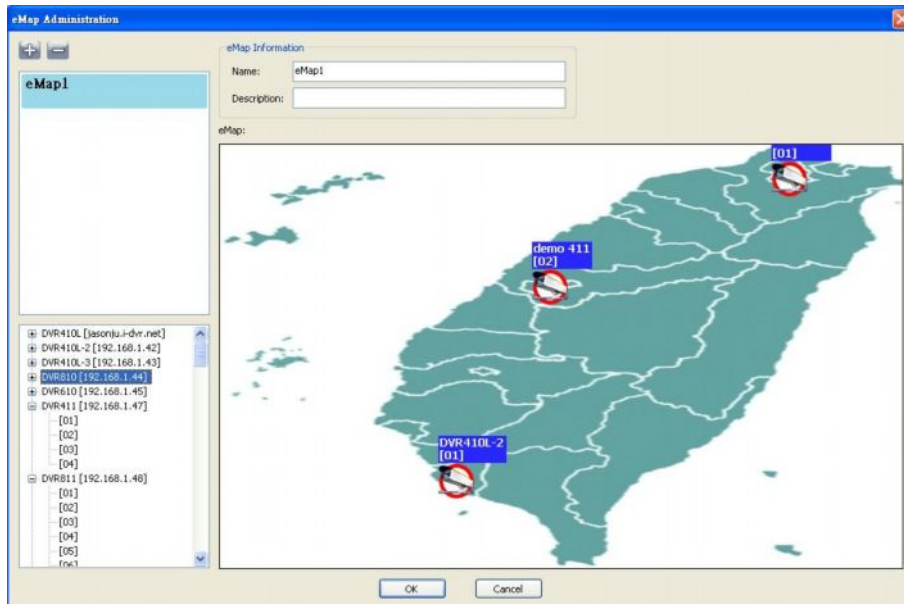


9-6.4 eMap Administration

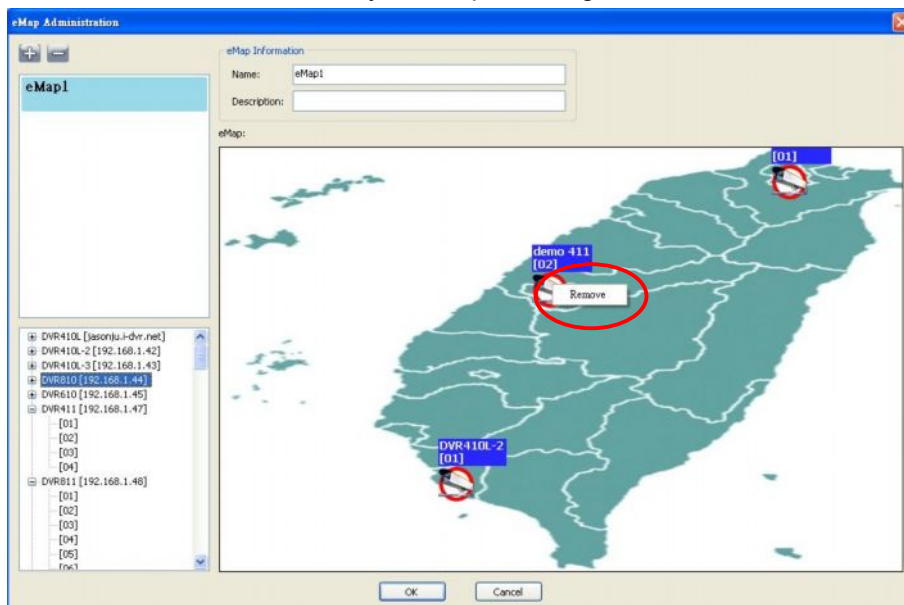
If geographical locations are relevant, or if it is desired to use a picture as the background, eMap can be used for the purpose. With eMap, the background picture can be picked by the user and channels from multiple DVRs can be placed and dragged around on the picture.

Steps to follow:

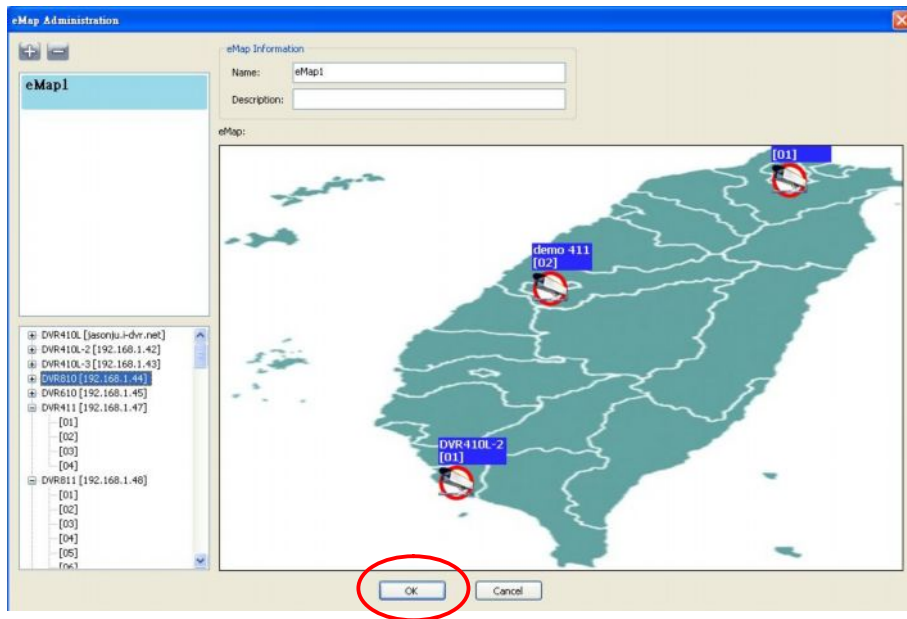
1. Click  and a path for the picture will be prompted.
2. Select a picture, click OK and the picture will show in the right panel.
3. Drag channels in the left lower corner onto the picture to any position.



4. To delete a channel already on the picture, right click the channel and click 'Remove'.

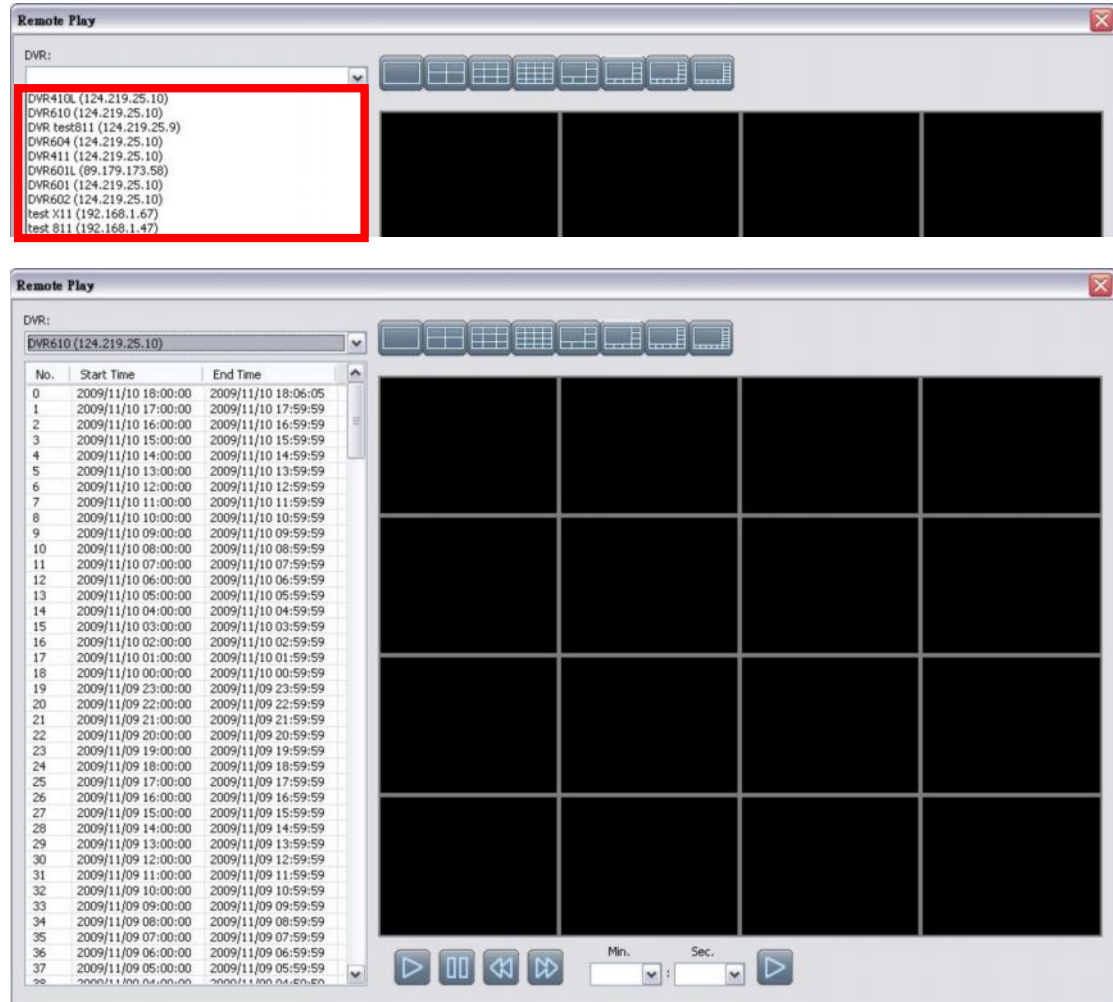








5. Click OK to save.



9-6.5 Remote Play

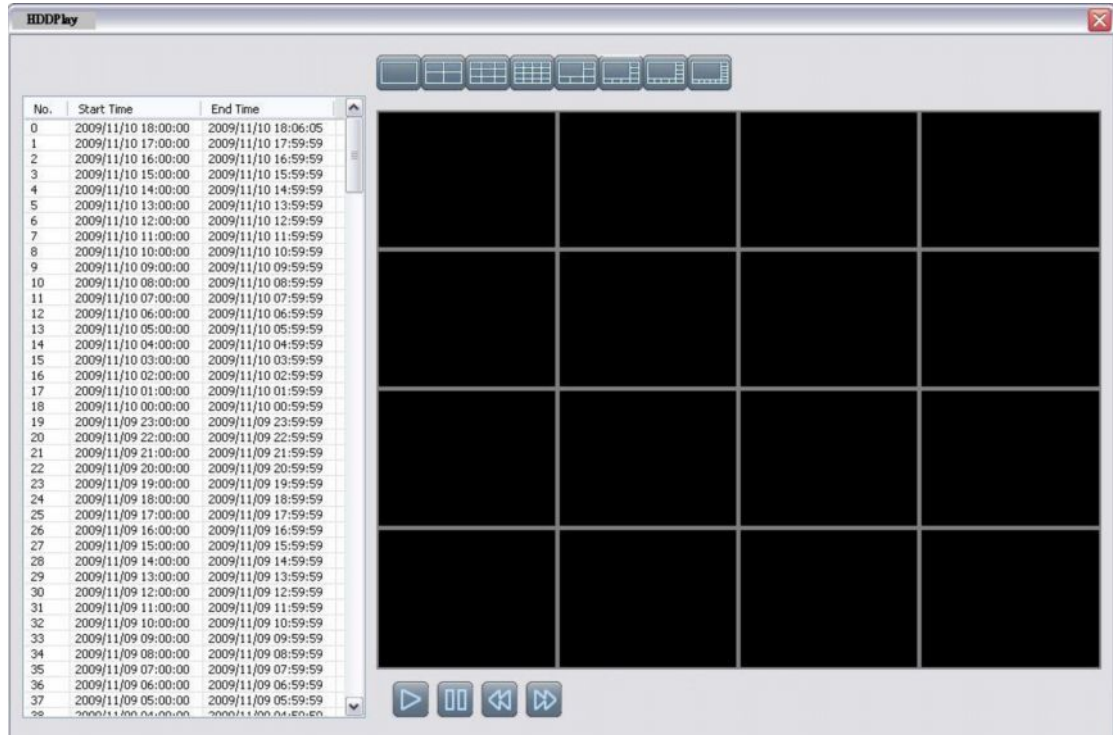
Video images recorded on a DVR can be displayed on a remote CMS. With Remote Play function, select a DVR and a display mode on top of the screen. After the recorded segments are listed below, double click on one to show its image on the right.







Icon	Description
	Start playing.
	Pause.
	Fast forward.
	Fast rewind.
<div style="display: flex; align-items: center;"> <div style="margin-right: 10px;">Min.</div> <input style="width: 40px; height: 20px;" type="text"/> <div style="margin: 0 5px;">:</div> <div style="margin-right: 10px;">Sec.</div> <input style="width: 40px; height: 20px;" type="text"/> <div style="margin-left: 10px;"></div> </div>	Select the clip you want to watch the number of minutes and seconds, Press the right button  is set to start playing

9-6.6 HDD Playback

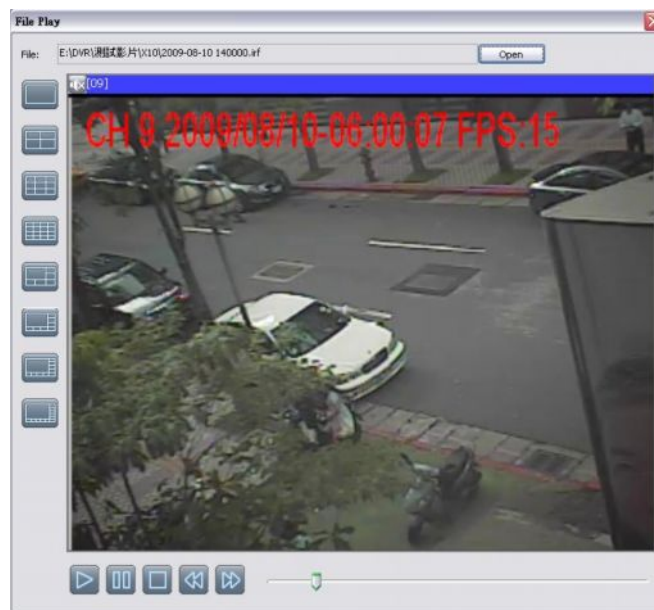
You can directly play the recording data in the HDD that's uninstalled from DVR by CMS. See the picture below, the left part of screen is recording data in list that's separated by hour and the right part is main display. You can change the display modes and play files fast forward or rewind.








Icon	Description
	Start playing.
	Pause.
	Fast forward.
	Fast rewind.

9-6.7 File Playback

You can play the recorded .irf files by “File Play” in CMS. It allows you to change the display mode, forward or rewind the file and drag the time bar.



Icon	Description
	Start playing.
	Pause.
	Stop playback.
	Fast forward.
	Fast rewind.

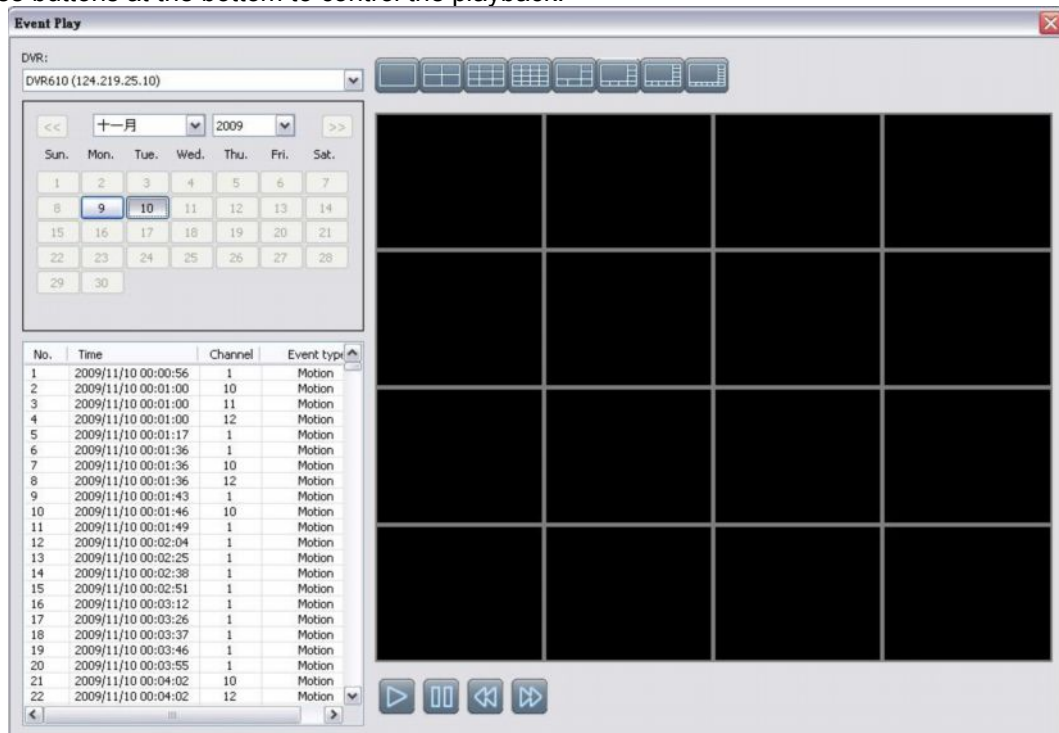
9-6.8 Event Playback

Event recordings on the DVR can be played back in CMS.

Steps to follow:

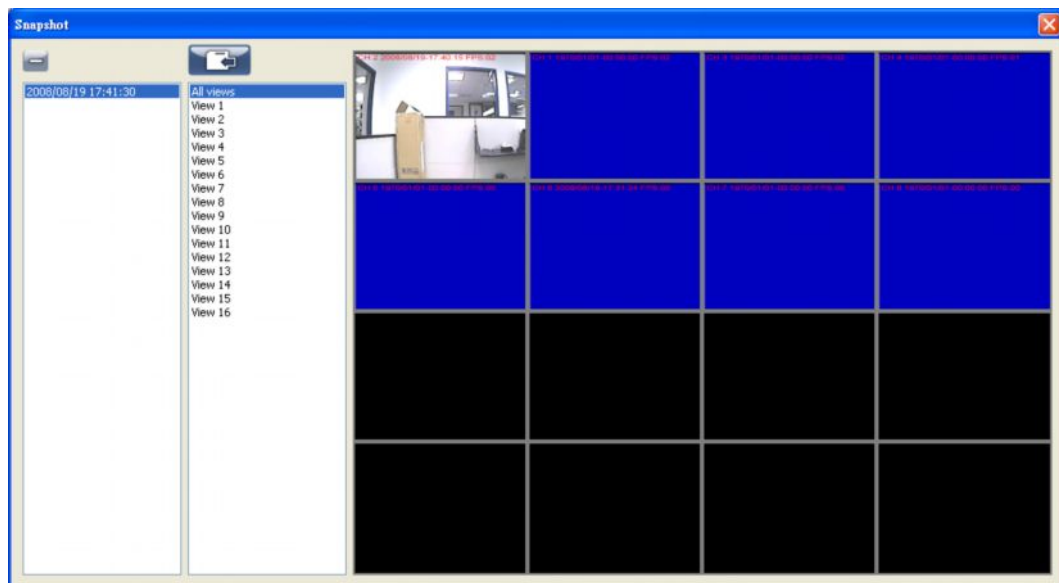
1. Select a DVR and a display mode.
2. Select a date.
3. Double click an event and play back the images on the right.

Use buttons at the bottom to control the playback.



9-6.9 Snapshot Data

It can display all the snapshots you've taken in line in "Snapshot Data". You can review, delete or save as other files here.



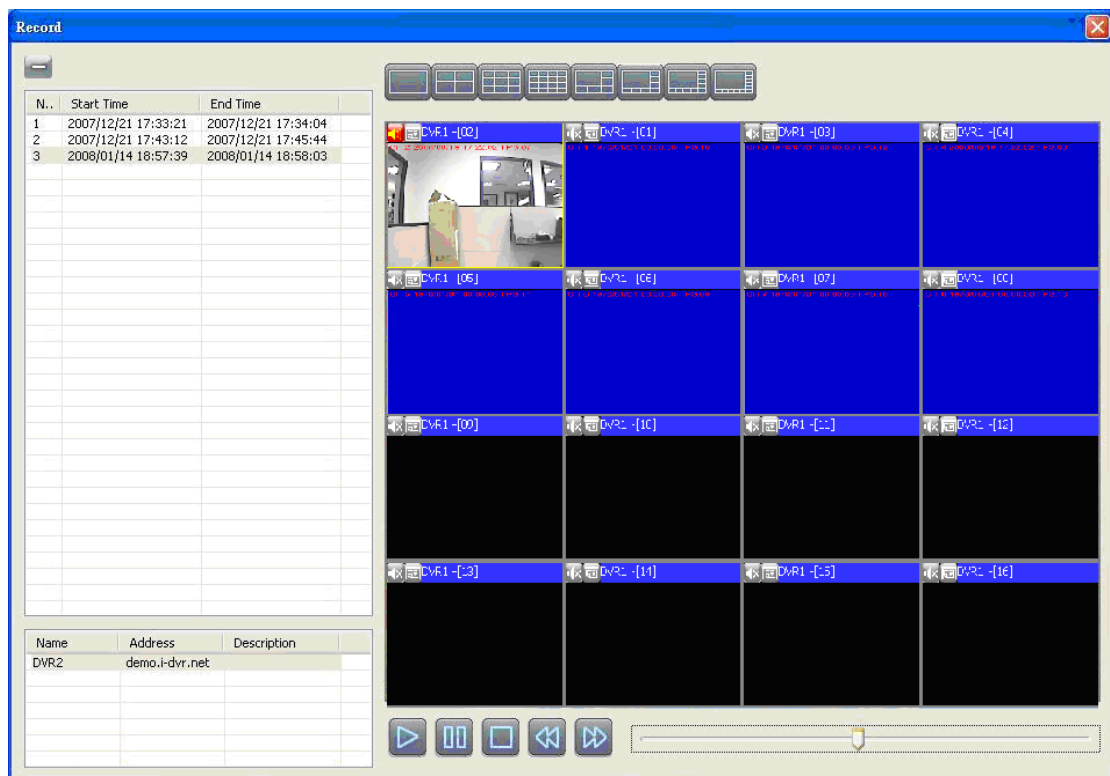
*Capture images of the date and time will follow the PC-time display






9-6.10 Recording Data

It can play all the recording files you've recorded in line in "Recording Data". You can play or delete them here.

Steps to follow:

1. Choose the recording time at upper left corner, it will be played on the main display.
2. You can choose the display mode.
3. Time bar will be shown at right lower corner, please drag the time bar to specify the recording time you'd like to play.



Icon	Description
	Start playing.
	Pause.
	Stop playback.
	Fast forward.
	Fast rewind.