

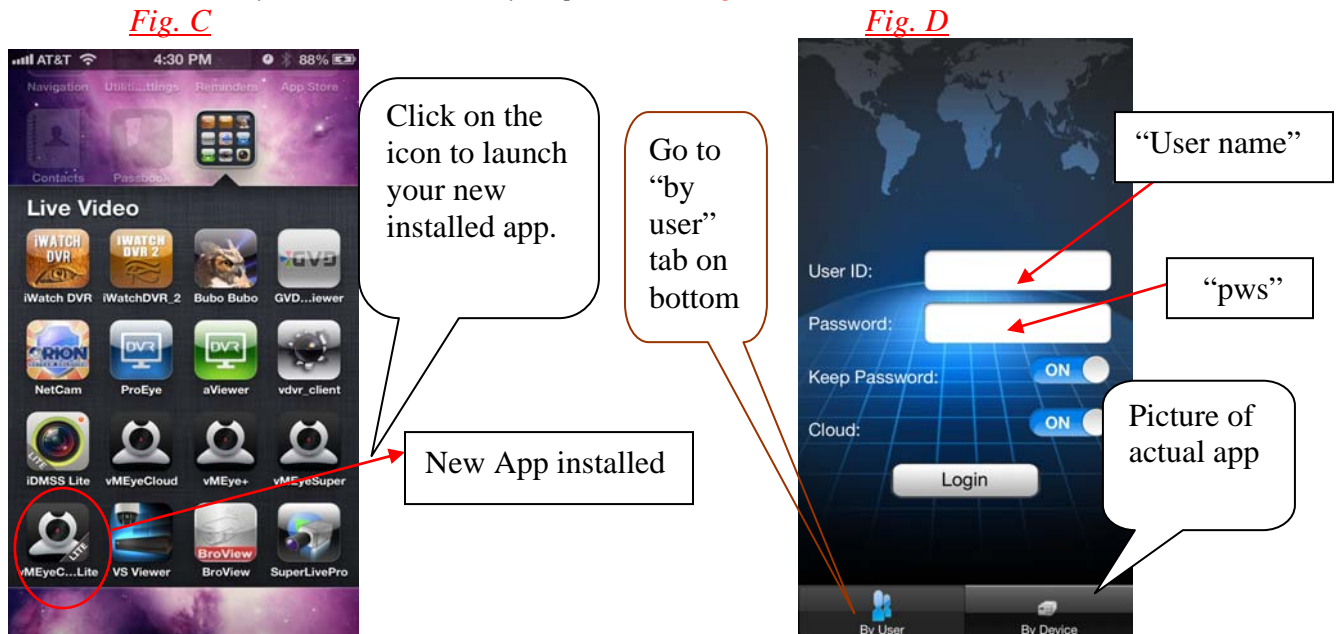
Setup iPhone for Remote View: **“vMEyeCloud Lite”**

Step 1: Install App for Viewing onto your iPhone via App Store option on phone. (See *Fig. A* below.)



Instruction on how to find & install app: (See *Fig. B* above)

1. In the “Search” field type: **“vMeyecLOUD lite”** (cost : **“free”**)
2. It will display one object.
3. Install the app by clicking on “free” then “Install” onto your phone.
4. Once installed you will see an icon on your phone. (See *Fig. C* below)



Completing above DVR information (See *Fig. D* above)

- Once you have created your account and setup on (xmeye.net) you will use that login user name and pws.



Setup iPhone for Remote View: "vMEyeCloud Lite"

Step 1: Ways to access your DVR using VMeyeCloud. (See Fig. A below.)

Fig. A



Enter user name: & psw to login.

Once you have finished installing the app then go ahead and launch it and login.

Fig. B



You can also login by: "Device"

Instruction on how to add a DVR: (See Fig. B above)

5. In the "By Device" click on "ADD"
6. It will come up to the next page to enter info. (See Fig. C below)

Fig. C

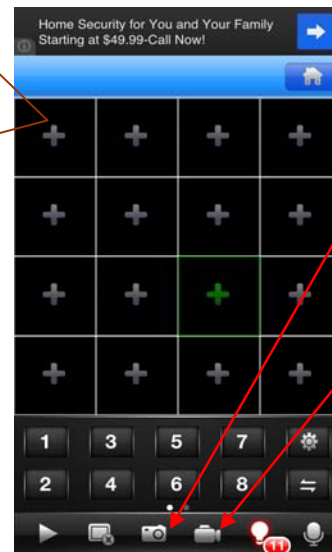


Enter name, serial id, user id, and psw. & how many ch view you want to see.

Click on each box to add your camera

Keep cloud "on"

Fig. D



"snapshot"

"local record"

Completing above DVR information (See Fig. D above)

- Once you have installed the app launch the app and on the bottom of the screen you will find two ways to login to your dvr. First, you can login by the user. By default you user name is set to "adminXXXX" and the last four digits of your mac address found on your DVR. The password is set to "123456." The only difference between this app and the vMEyeCloud is that the LITE version will have adds and banners popup in the actual app when launched.