

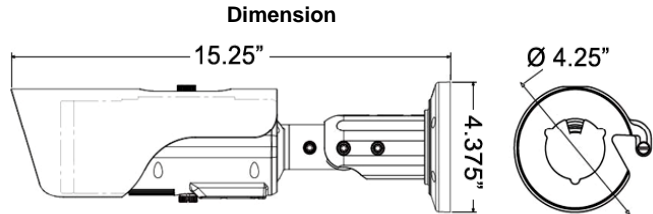


Thermal Imaging Surveillance IP Camera

IV-THM42F25

Features:

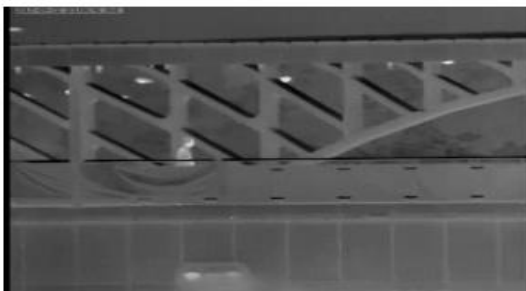
- Uncooled IRFPA Microbolometer
- 8 ~ 14um long wave infrared detection
- Effective resolution 396 x 264
- Heat sensitivity, up to 50mK
- 25mm focal lens (8/15/35/50 mm lens optional)
- Temperature detection
- Support 8 area temperature detection
- Support DVE image enhancement features
- Supports H.264 / MJPEG ; support 17 polarity control
- Support pseudo-color mode switching: Black hot / White Heat / Rainbow / on oxide red
- Support Micro SD (max up to 32GB) card local storage, can effectively solve the video lost due to network failure caused the problem
- 1ch audio input/ 1ch audio output; 2ch alarm in /2ch alarm out
- 3-Axis rotation adjustable bracket for easy installation adjustment
- DC12V/POE, IP66



Night remote parking monitoring



Night road monitoring



Hidden target identification



Residual heat detection

Accessories



IV-PCK233RJB (optional)



IV-PCK238MJB (optional)

Specification	IV-THM42F25
CAMERA	
Detector Type	Long-Life, Uncooled IRFPA Microbolometer
Effective Resolution	396 x 264
Pixel Pitch	20um
Spectral Range	8 ~ 14um
Thermal Sensitivity NETD	50mK
Temperature Response	30ms
Lens	F1.0, 08mm,15mm,25mm,35mm,50mm optional
Focus	Manual
FOV (Fixed Lens)	43.6°x36.4°/24°x18°/14.6°x11°/10.5°x7.8°/7.3°x5.5°
Temperature Detect Distance(Fire)	160m(Lens:8mm) / 300m(Lens:15mm) / 500m(Lens:25mm) / 1000m(Lens:35mm) / 1500m(Lens:50mm)
Fixed Lens Recognition Distance (Body)	100/200/300/450/650m
Fixed Lens Recognition Distance(Vehicle)	200/350/600/850/1200m
IMAGE	
Video Compression	H.264 High/Main/Baseline Profile, MJPEG
Bit Rate (CBR/VBR)	100kb-6000kb
Audio Compression	G.711 ,RAW_PCM,NONE
Max.Resolution	D1/30fps
Stream	D1 to QCIF
Image Color Mode	Black-Heat /White-Heat/Rainbow/Iron-Red up to 17 modes
DVE Image Enhance	Yes
3D Noise Reduce	Yes
Image Correction	Auto/Manual/External
Image Overturn	Horizontal /Vertical /Horizontal+Vertical
NETWORK	
Network Protocol	IPv4/v6,RTSP/RTP/RTCP,TCP/UDP,HTTP,DHCP,DNS,FTP,DDNS,PPPOE,SMTP,SIP
Alarm Trigger	Temperature Alarm,MotionDetection,Networkdisconnect,Diskalarm,I/O alarm
RTSP Video	Standard RFC2326, Support QuickTime / VLC Player.
Security	User security authentication, Reset, Hardware WatchDog
System Compatibility	Onvif
INTERFACE	
Ethernet	1 Ethernet (10/100 Base-T) RJ-45 Connector
Audio I/O	1ch Audio In,1ch Audio Out
Alarm I/O	2ch Alarm In,2ch Alarm Out
RS485	Yes
BNC Output	Yes
Reset Button	Yes
Edge Storage	Micro SD/SDHC slot ,Max 32GB
GENERAL	
Power Supply	DC12V/ POE
Power Consumption	5W (MAX)
Operating Temperature	14F ~139F (-10°C ~ +55°C)
Humidity	RH90% MAX(Non-condensing)
Approvals	CE / FCC
Ingress Protection	IP66
Dimension	4.375" x 15.25" (110 x 388mm)
Weight	4.19 lbs. (1900g)