

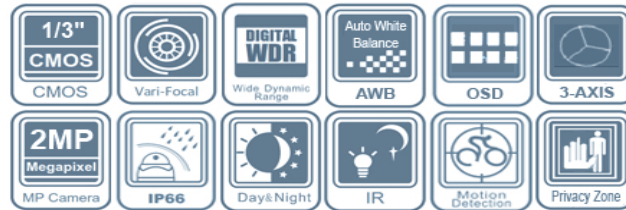
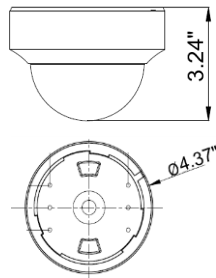


## Auto Focus 1080P TVI Indoor IR Dome

### IV-DV2812-TVI-AF

#### Features:

- . 1080P@TVI / CVBS dual video output
- . EN773E + Sony 322 Sensor
- . IR LED: 15pcs
- . IR distance: 60 ft
- . Lens: 2.8-12mm Auto Focus lens: 1x ~ 8x zoom
- . Ultra low illumination
- . DC 12V IP66
- . Up the Coax (via coaxial cable)
- . Motion detection, Privacy mask, HLC, WDR
- . Built-in 3 Axis bracket for Lens



Specification	IV-DV2812-TVI-AF
Horizontal Resolution	1080P@TVI / CVBS video output simultaneously
Image Sensor	EN773E + Sony 322
Signal System	PAL/NTSC
Lens	2.8-12mm Auto Focus lens
Electronic Shutter	AUTO/MANUAL(1/60 ~ 1/30,000 sec)
Min. Illumination	0.001Lux (F1.2), Black and White (0 Lux LED on)
BLC	Off/BLC
HLC	Off/HLC
AGC	0-20 steps
Sens up	Off/2x-8x
White Balance	Auto/Auto-ext/Preset/Manual
Digital Zoom	1.0x-8.0x
Privacy Mask	16 Zones
LED Wave Length	15pcs 850nm Infrared LED
IR Distance	60 ft
OSD Menu	Yes (via coaxial cable)
LED Auto Switch	Night / Day, ON / OFF
IP Rating	IP66
Video Output	HD-TVI (1080P) Analog : 1Vp-p Composite Output(75Ohm/BNC)
Signal Transmitting	Over 1050 feet distance via Coaxial cables(RG59 75-3 Full Cooper)
Dimension	Ø4.37" X 3.24"
Weight	1.70 lbs.
Storage Temperature	-4 °F ~ 140 °F
Operation Temperature	-4 °F ~ 122 °F
Power Supply	DC 12V