

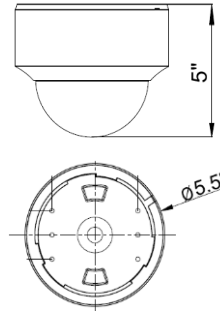


## Auto Focus 1080P CVI Indoor/Outdoor IR Dome

### IV-DV720IR-CVI-AF

#### Features:

- . 1080P@CVI / CVBS dual video output
- . EN773E + Sony 322 Sensor
- . IR LED: 30pcs with IR distance: 90 feet
- . Thicker base for easy cable management
- . Lens: 2.8-12mm Auto Focus lens: 1 ~ 8X zoom
- . Ultra low illumination
- . OSD with UTC support
- . DC 12V / AC 24V
- . Motion detection, Privacy mask, HLC, DWDR
- . Built-in 3 Axis bracket for Lens
- . IP66



Specification	IV-DV720IR-CVI-AF
Horizontal Resolution	1080P@CVI / CVBS video output simultaneously
Image Sensor	EN773E + Sony 322
Signal System	PAL/NTSC
Lens	2.8-12mm Auto Focus lens
Electronic Shutter	AUTO/MANUAL(1/60 ~ 1/30,000 sec)
Min. Illumination	0.001Lux (F1.2), Black and White (0 Lux LED on)
BLC	Off/BLC
HLC	Off/HLC
AGC	0-20 steps
Sens up	Off / 2x ~ 8x
White Balance	Auto/Auto-ext/Preset/Manual
Digital Zoom	1.0x ~ 8.0x
Privacy Mask	16 Zones
LED Wave Length	30pcs 850nm Infrared LED
IR Distance	90 ft
OSD Menu	Yes (via coaxial cable)
LED Auto Switch	Night / Day, ON / OFF
IP Rating	IP66
Video Output	CVI : HD-CVI (1080P) Analog : 1Vp-p Composite Output (75Ohm/BNC)
Signal Transmitting	Over 1050 feet distance via Coaxial cables (RG59 75-3 Full Cooper)
Dimension	5.5" X 5"
Weight	2.30 lbs.
Storage Temperature	-4 °F ~ 140 °F
Operation Temperature	-4 °F ~ 122 °F
Power Supply	DC 12V / AC 24V